

INOVA AL

FLOOD PROTECTION



Tailor made for each application.

High resistance and low weight of individual components

System certified for water column up to 5m.

Easy and quick to use.

Long lifespan.



TAILOR-MADE SOLUTION

The placement and the size of the barrier are always tailored specifically to the needs of the customer. Even complicated openings can be protected with this system. The INOVA AL barrier comes in two versions – INOVA AL80 and INOVA AL50. The systems differ in size and their use is dependent on the height of the water column they need to protect from. If needed, both systems can be combined.

ENTRANCE PROTECTION INSTALLATION

The barrier can be mounted within just a few minutes to protect an opening against water. Initial installation of the solution consists solely of installing the fixed elements – lateral guidance on the side of the protected opening. The mobile elements of the solution – beams are inserted between the lateral guidances when needed and compressed together by pressure tools.



Before installation of the system



After installation of the system



LINEAR PROTECTION INSTALLATION

The anchor feet and the stainless steel strap are mounted firmly in the concrete foundation. We deliver columns and beams in a disassembled state. In case of imminent danger of flooding, the individual aluminum beams are slid between the columns, which are anchored to the anchor plates in the lower structure. Once the beams are in place, pressure tools are inserted in the lateral guidances. Tightening the pressure tools compresses rubber seals between the beams, creating an impermeable barrier.



Installation of linear protection



Installation of lateral guidances

STORAGE

All mobile elements can be stored either all together in a general storage or separately close to each opening in a wall rack. The entire system must be cleaned and checked for damage after use to ensure it can be used again safely.

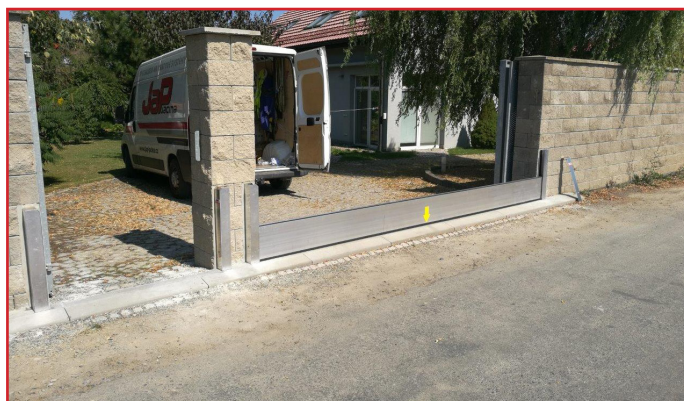


Storage in a wall rack



Storage on pallet

Entrance protection



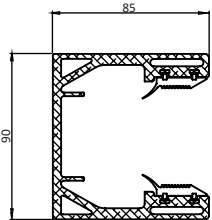
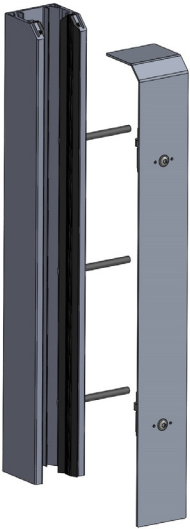
Linear protection



PARTS OF THE SYSTEM

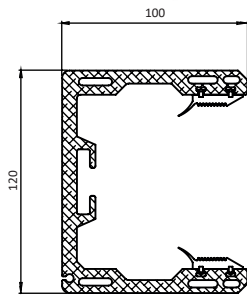
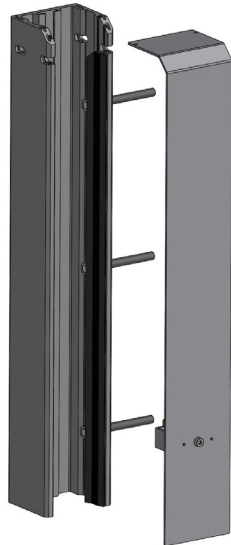
INOVA AL50

lateral guidance and cover



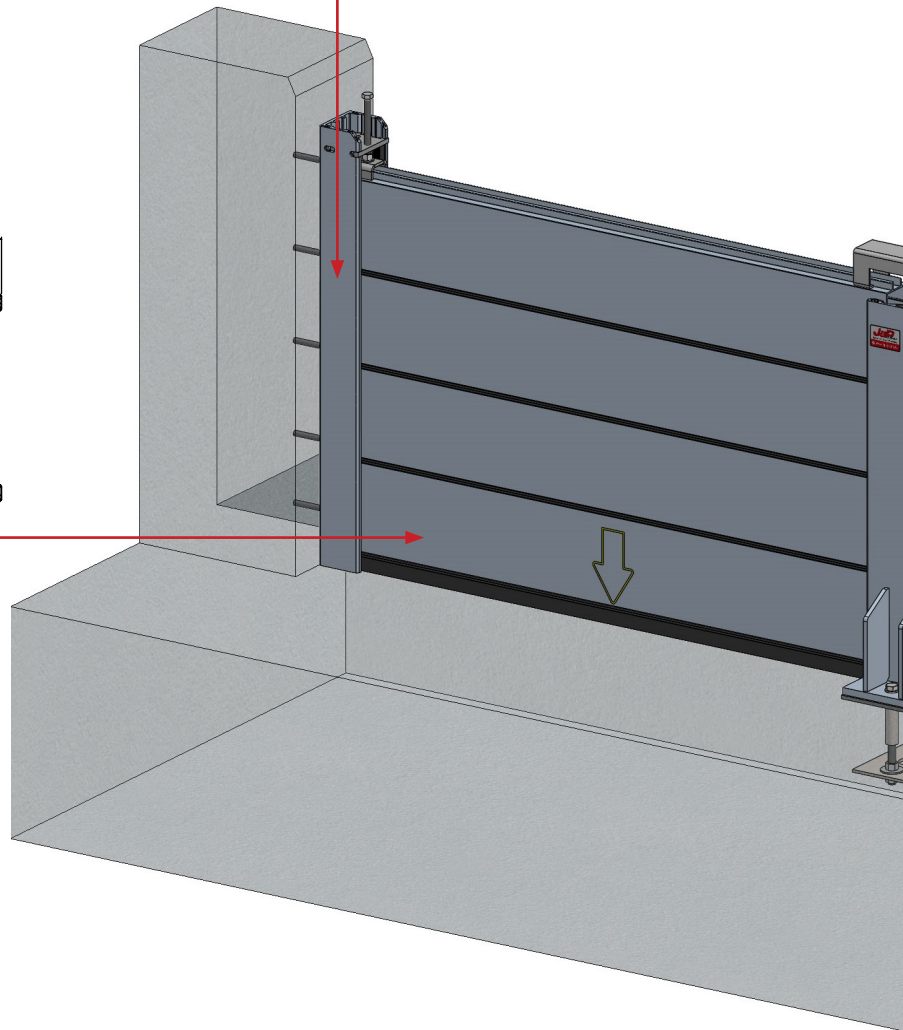
INOVA AL80

lateral guidance and cover



LATERAL GUIDANCE

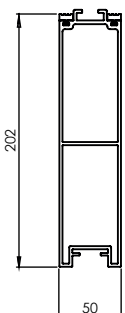
The lateral guidance is made of a special aluminum U-profile with a vertically inserted EPDM rubber sealing. It is a permanently built-in part on sides of the protected opening. There are several variations of its location. At a time when the system is demounted there are covers on a groove of the lateral guidance. The covers are meant to protect these parts of the system.



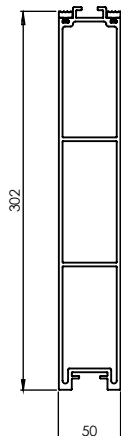
BEAM

The overall system is based on shaped aluminum beams with excellent mechanical properties despite their low weight. Weight of a standard meter of the beam is from 4 to 7 kg depending on type of the beam. They are inserted between the column and lateral guidance. A special bottom aluminum beam is always installed first, as it is additionally equipped with a microporous threshold sealing equalizing floor unevenness of up to 15 mm. The beam length depends on the required load resistance and easy handling; usually it is approx. from 1 m to 4 m.

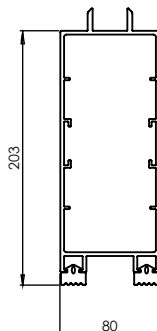
INOVA AL50 200



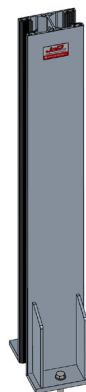
INOVA AL50 300



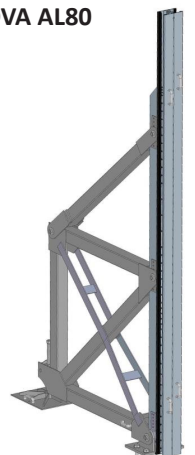
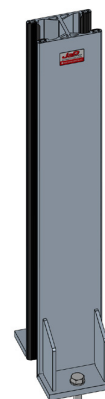
INOVA AL80 200



INOVA AL50



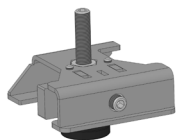
INOVA AL80



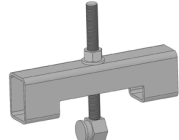
COLUMN PRESSURE TOOL

In order to achieve maximum barrier tightness, the inserted beams are compressed by pressure tools to be slid into the column groove or lateral guidance and subsequently tightened. Several types of pressure tools are available for both columns and lateral guidance, including a lockable version eliminating inadvertent disassembly of the barrier.

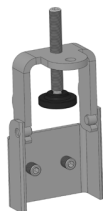
INOVA AL50



standard pressure tool

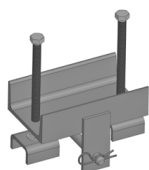


column pressure tool



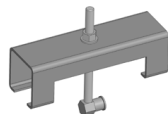
U-pressure tool

INOVA AL80

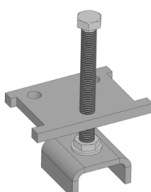


pressure tool for

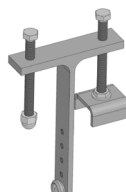
T-pressure tool column with support



column pressure tool



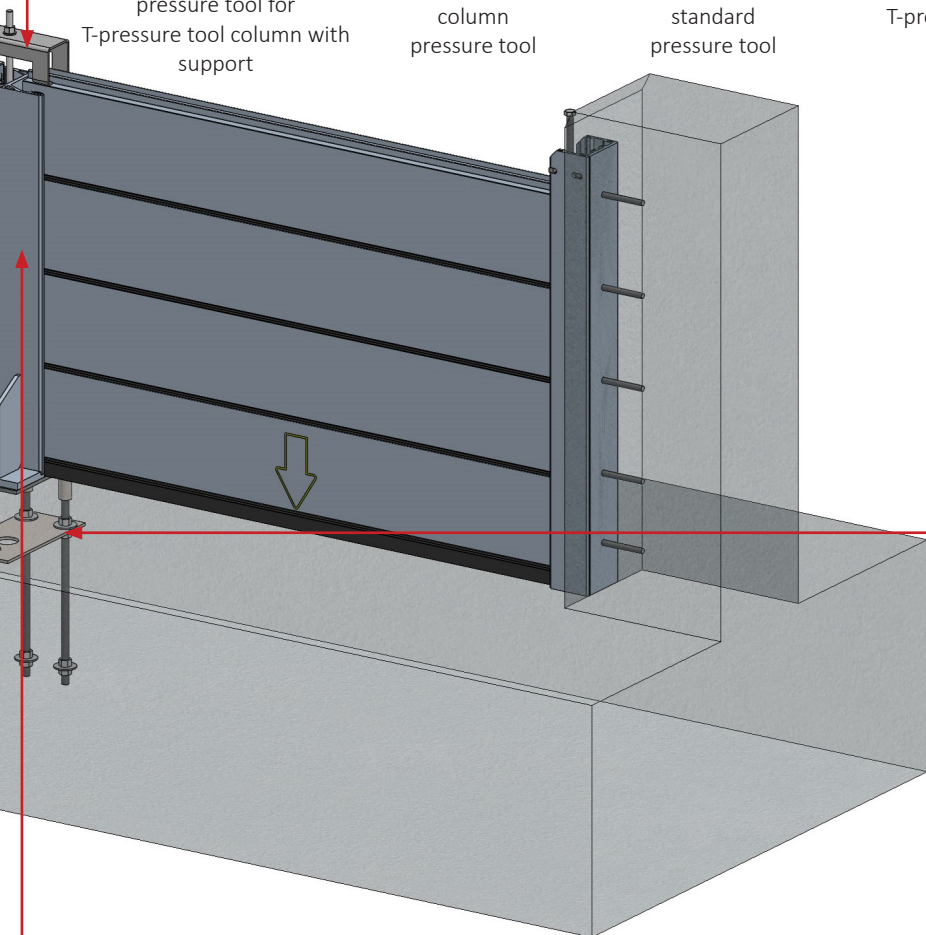
standard pressure tool



T-pressure tool

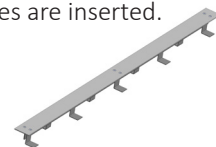


sliding pressure tool



STAINLESS STEEL STRIP

Stainless steel strips are fixed parts of the system that are concreted at ground level. These tapes are placed in extremely stressed sections, where the flatness of the foundation could be disturbed and thus a leak when the gates are inserted.



ANCHORING OF COLUMNS

Anchor plates/sleeves are fixed elements of the system, which are set in concrete flush with terrain or on top of flood walls. Top part is made of stainless steel.

COLUMN

The aluminum columns are used when protecting larger openings. They help to evenly distribute the hydrostatic pressure impacting primarily the bottom beam. When installing the column, an anchor plate or stainless steel anchor sleeves with a screw cover must be built into the floor. On this fixed part is mounted the mobile part- the column which is pressed to the floor through the sealing profile.



anchor sleeve



anchor plates



The INOVA AL mobile barrier can be used in both private and industrial sector to protect driveways, entrances, windows or passages from water caused by floods or torrential rain.



INOVA AL50, entrance protection



INOVA AL50, linear protection



INOVA AL80, entrance protection



INOVA AL80, linear protection

022022.0190EN

Other flood protection solutions:

- | | | | | | | | |
|-----------------------------|-------------------------|----------------|-------------------------|--------------------|-------------------------------|------------------------|----------------------------------|
| | | | | | | | |
| MOBILE BARRIER:
INOVA AL | MOBILE BARRIER:
FLOM | PASSIVE
DAM | WATERTIGHT DOOR:
PPD | WATERTIGHT
GATE | ANTI-CONTAMINATION
BARRIER | MOBILE BARRIER:
JPZ | ATYPICAL
WATERTIGHT SOLUTIONS |